

NKR25 Borderline_PICO5_kort vs lang behandling**Characteristics of studies****Characteristics of excluded studies****Antonsen 2014**

Reason for exclusion	Wrong comparator
----------------------	------------------

Antonsen 2016

Reason for exclusion	Wrong study design
----------------------	--------------------

Beck 2016

Reason for exclusion	No data
----------------------	---------

Chanen 2015

Reason for exclusion	No data
----------------------	---------

Cristea 2017

Reason for exclusion	Review
----------------------	--------

Cristea 2017a

Reason for exclusion	Review
----------------------	--------

Davidson 2014

Reason for exclusion	Review
----------------------	--------

Davidson 2014a

Reason for exclusion	Wrong patient population
----------------------	--------------------------

Gratz 2014

Reason for exclusion	Wrong study design
----------------------	--------------------

Gratz 2014a

Reason for exclusion	Wrong patient population
----------------------	--------------------------

Gratz 2015

Reason for exclusion	Wrong study design
----------------------	--------------------

Jochems 2015

Reason for exclusion	Wrong comparator
----------------------	------------------

Jochems 2016

Reason for exclusion	Wrong study design
----------------------	--------------------

Kramer 2014

Reason for exclusion	Wrong comparator
----------------------	------------------

Kramer 2016

Reason for exclusion	Wrong study design
----------------------	--------------------

Kramer 2016a

Reason for exclusion	Wrong study design
----------------------	--------------------

Kramer 2017

Reason for exclusion	Wrong study design
----------------------	--------------------

Laurensen 2014

Reason for exclusion	No data
----------------------	---------

Laurensen 2014a

Reason for exclusion	No data
----------------------	---------

Lin 2018

Reason for exclusion	Wrong comparator
----------------------	------------------

Mahlke 2015

Reason for exclusion	No data
----------------------	---------

McMurrin 2016

Reason for exclusion	Wrong patient population
----------------------	--------------------------

McMurrin 2017

Reason for exclusion	Wrong patient population
----------------------	--------------------------

Mehlum 2014

Reason for exclusion	Wrong patient population
----------------------	--------------------------

Mehlum 2016

Reason for exclusion	Wrong patient population
----------------------	--------------------------

Mohamadizadeh 2017

Reason for exclusion	Wrong comparator
----------------------	------------------

Robinson 2014

Reason for exclusion	No data
----------------------	---------

Robinson 2014a

Reason for exclusion	Review
----------------------	--------

Robinson 2016

Reason for exclusion	Wrong patient population
----------------------	--------------------------

Rossouw 2015

Reason for exclusion	No data
----------------------	---------

Rossouw 2015a

Reason for exclusion	No data
----------------------	---------

Salzer 2014

Reason for exclusion	Wrong patient population
----------------------	--------------------------

Schilling 2015

Reason for exclusion	Wrong comparator
----------------------	------------------

Schilling 2018

Reason for exclusion	Wrong comparator
----------------------	------------------

Soler 2016

Reason for exclusion	Wrong outcomes
----------------------	----------------

Footnotes

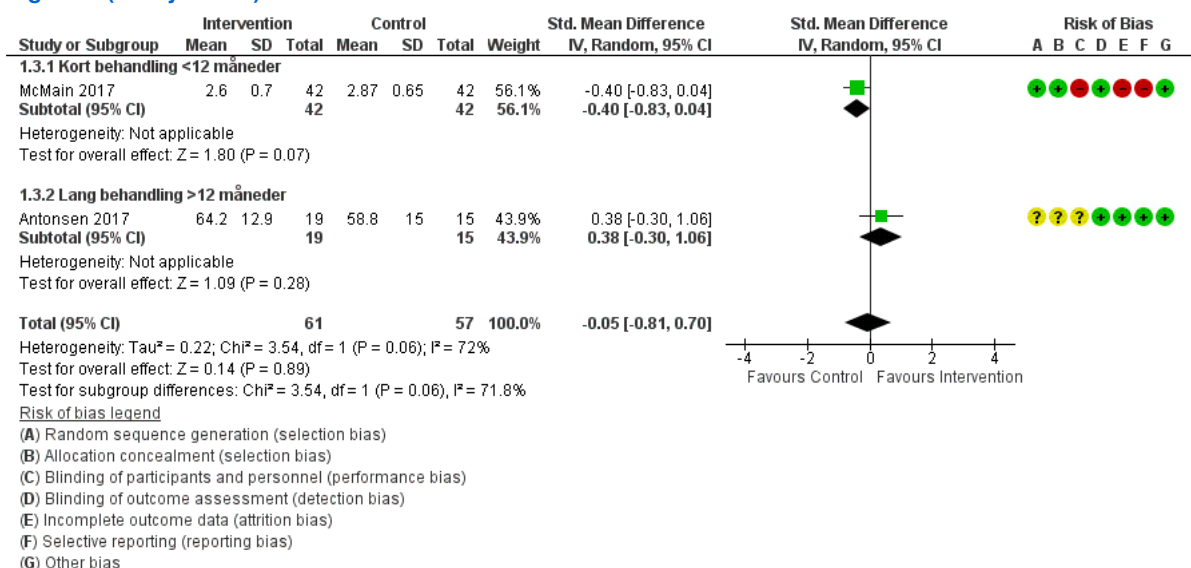
Summary of findings tables**Data and analyses**

1 Intervention vs Control

Outcome or Subgroup	Studies	Participants	Statistical Method	Effect Estimate
1.3 Social functioning. Længste follow-up	2	118	Std. Mean Difference (IV, Random, 95% CI)	-0.05 [-0.81, 0.70]
1.3.1 Kort behandling <12 måneder	1	84	Std. Mean Difference (IV, Random, 95% CI)	-0.40 [-0.83, 0.04]
1.3.2 Lang behandling >12 måneder	1	34	Std. Mean Difference (IV, Random, 95% CI)	0.38 [-0.30, 1.06]
1.6 Quality of life. Længste follow-up	2	61	Std. Mean Difference (IV, Random, 95% CI)	0.78 [0.25, 1.31]
1.6.1 Kort behandling <12 måneder	1	27	Std. Mean Difference (IV, Random, 95% CI)	1.04 [0.22, 1.86]
1.6.2 Lang behandling >12 måneder	1	34	Std. Mean Difference (IV, Random, 95% CI)	0.59 [-0.10, 1.28]
1.9 Borderline severity. Længste follow-up	3	145	Std. Mean Difference (IV, Random, 95% CI)	-0.62 [-1.22, -0.01]
1.9.1 Kort behandling <12 måneder	2	111	Std. Mean Difference (IV, Random, 95% CI)	-0.69 [-1.76, 0.39]
1.9.2 Lang behandling >12 måneder	1	34	Std. Mean Difference (IV, Random, 95% CI)	-0.61 [-1.30, 0.09]
1.14 Interpersonal. Længste follow-up	1	34	Mean Difference (IV, Fixed, 95% CI)	-0.42 [-0.86, 0.02]
1.14.1 Lang behandling > 12 måneder	1	34	Mean Difference (IV, Fixed, 95% CI)	-0.42 [-0.86, 0.02]
1.15 Proportion of patients with ED visits. Længste follow-up	1	84	Mean Difference (IV, Fixed, 95% CI)	0.09 [-0.03, 0.21]
1.15.1 Kort behandling <12 måneder	1	84	Mean Difference (IV, Fixed, 95% CI)	0.09 [-0.03, 0.21]
1.17 Symptom distress. End of treatment	8	555	Std. Mean Difference (IV, Random, 95% CI)	-0.39 [-0.65, -0.13]
1.17.1 Kort behandling	5	317	Std. Mean Difference (IV, Random, 95% CI)	-0.58 [-0.83, -0.33]
1.17.3 Lang behandling > 12 måneder	3	238	Std. Mean Difference (IV, Random, 95% CI)	-0.04 [-0.30, 0.21]
1.24 Proportion of patients hospitalized. End of treatment	1	84	Mean Difference (IV, Fixed, 95% CI)	-0.12 [-0.18, -0.06]
1.24.1 Kort behandling <12 måneder	1	84	Mean Difference (IV, Fixed, 95% CI)	-0.12 [-0.18, -0.06]
1.25 Selfharm (Selvmordsrelateret adfærd/forsøg) End of treatment	17		Std. Mean Difference (IV, Random, 95% CI)	-0.35 [-0.63, -0.08]
1.25.1 Kort behandling < 12 måneder	8		Std. Mean Difference (IV, Random, 95% CI)	-0.39 [-0.75, -0.02]
1.25.2 Lang behandling > 12 måneder	9		Std. Mean Difference (IV, Random, 95% CI)	-0.33 [-0.77, 0.11]
1.26 Drop-out. End of treatment	23	1379	Risk Ratio (IV, Random, 95% CI)	0.96 [0.75, 1.22]
1.26.1 Kort behandling <12 måneder	11	600	Risk Ratio (IV, Random, 95% CI)	1.32 [0.79, 2.20]
1.26.2 Lang behandling >12 måneder	12	779	Risk Ratio (IV, Random, 95% CI)	0.79 [0.65, 0.96]
1.30 No. of hospitalizations. End of treatment	2	192	Risk Ratio (IV, Random, 95% CI)	0.73 [0.22, 2.39]
1.30.1 Kort behandling < 12 måneder	1	170	Risk Ratio (IV, Random, 95% CI)	0.39 [0.21, 0.73]
1.30.2 Lang behandling >12 måneder	1	22	Risk Ratio (IV, Random, 95% CI)	1.31 [0.84, 2.03]

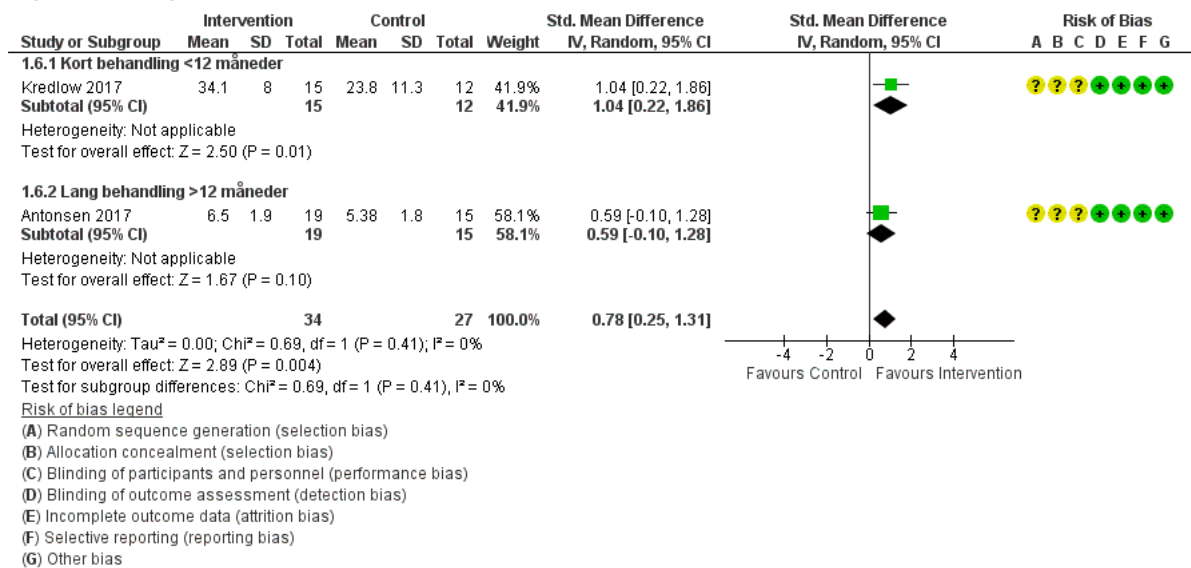
Figures

Figure 2 (Analysis 1.3)



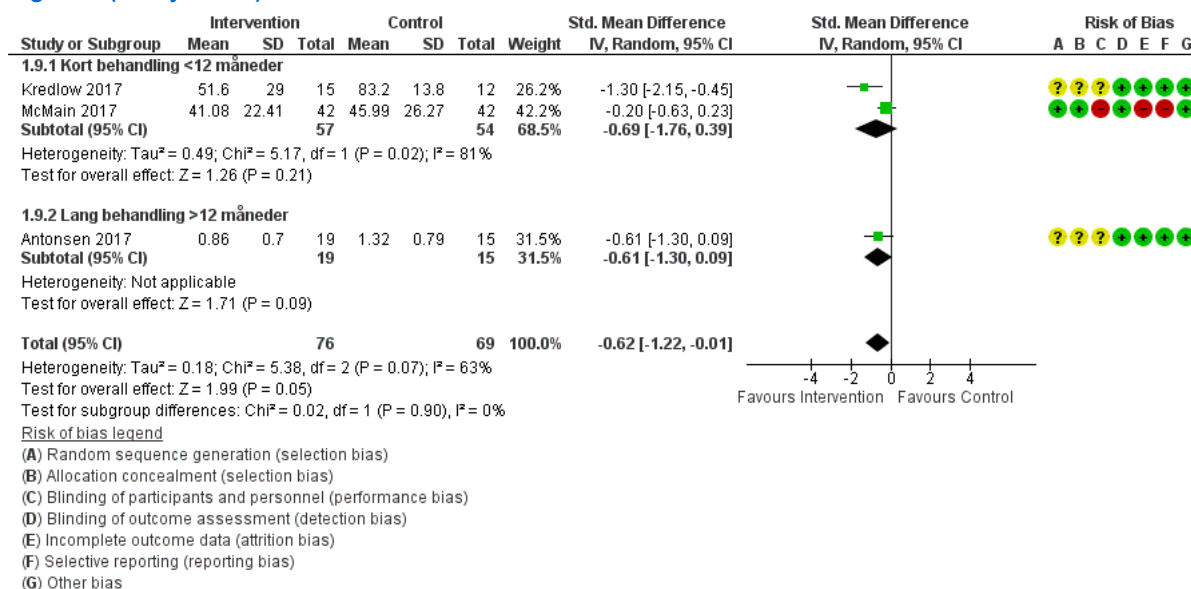
Forest plot of comparison: 1 Intervention vs Control, outcome: 1.3 Social functioning. Længste follow-up.

Figure 4 (Analysis 1.6)



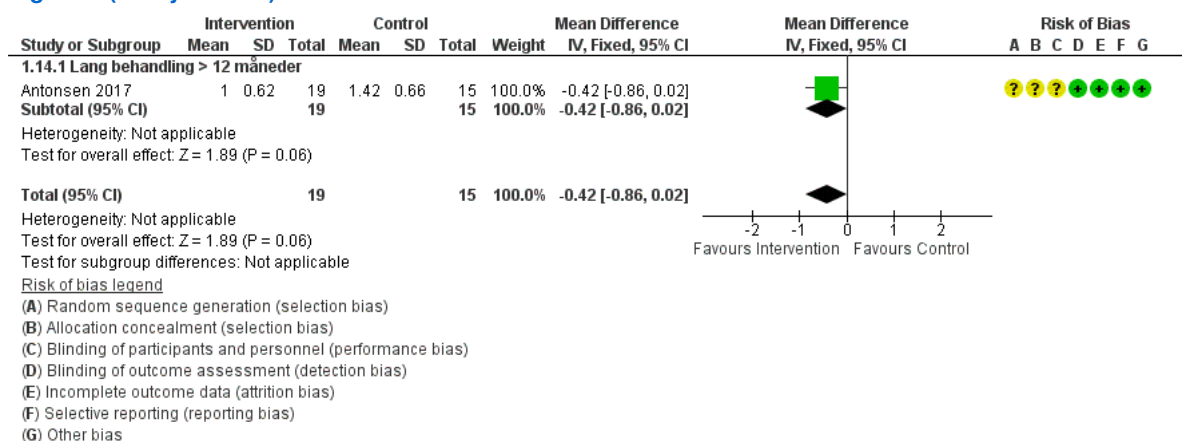
Forest plot of comparison: 1 Intervention vs Control, outcome: 1.6 Quality of life. Længste follow-up.

Figure 6 (Analysis 1.9)



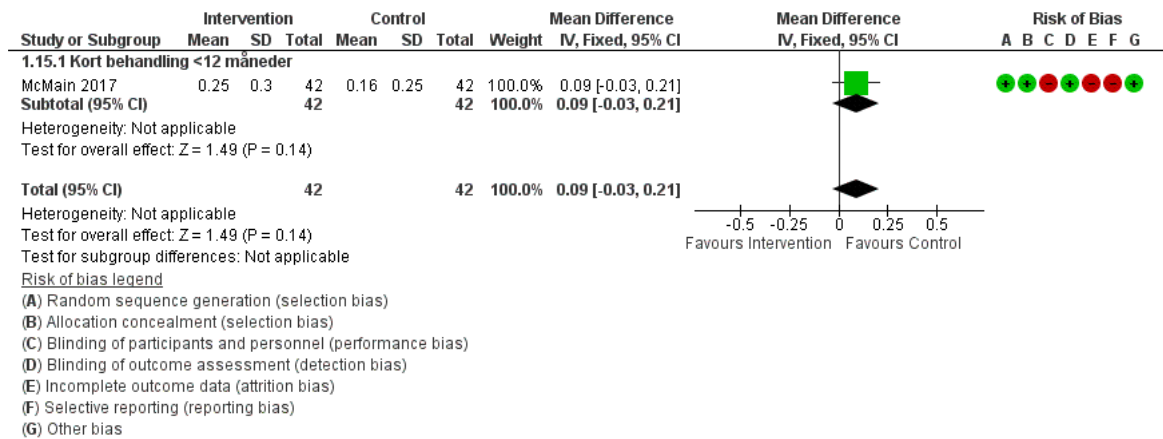
Forest plot of comparison: 1 Intervention vs Control, outcome: 1.9 Borderline severity. Længste follow-up.

Figure 8 (Analysis 1.14)



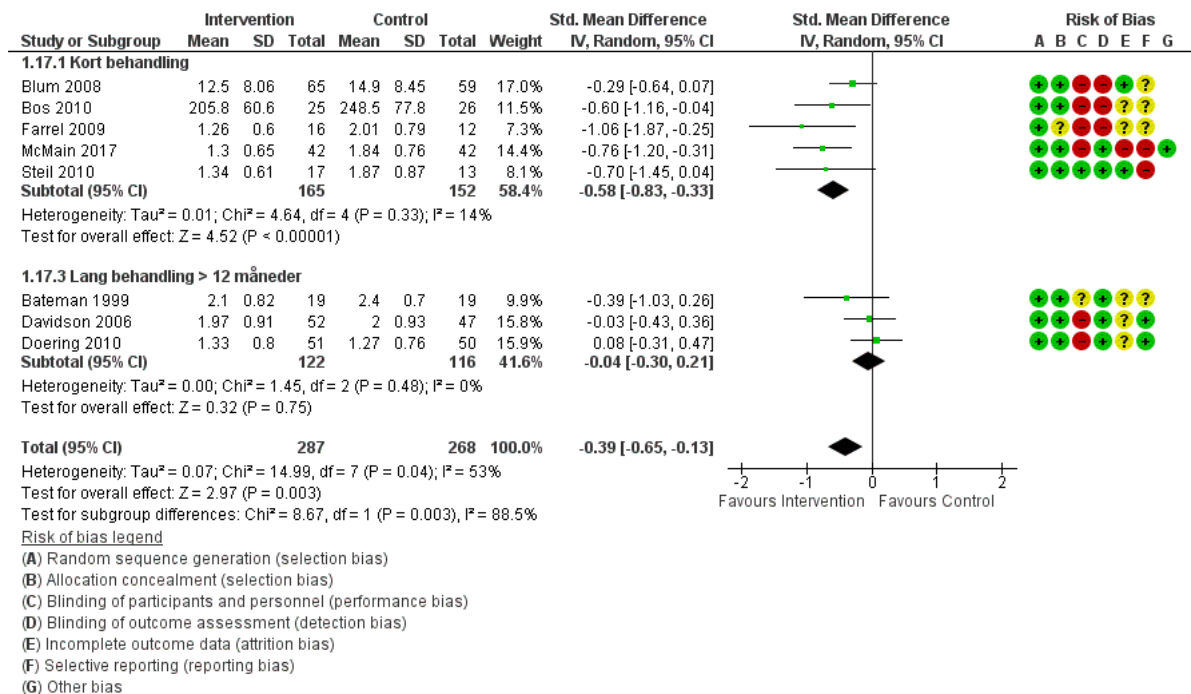
Forest plot of comparison: 1 Intervention vs Control, outcome: 1.14 Interpersonal. Længste follow-up.

Figure 9 (Analysis 1.15)



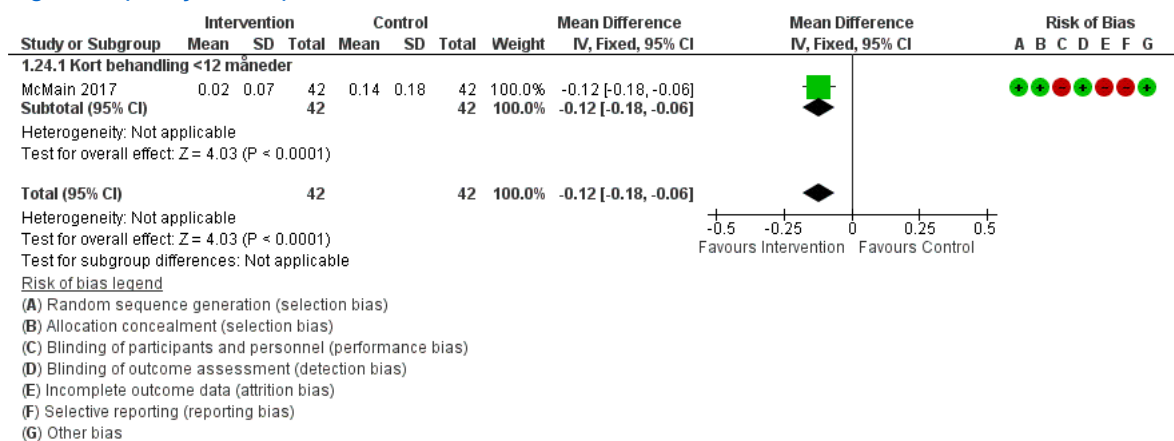
Forest plot of comparison: 1 Intervention vs Control, outcome: 1.15 Proportion of patients with ED visits. Længste follow-up.

Figure 10 (Analysis 1.17)



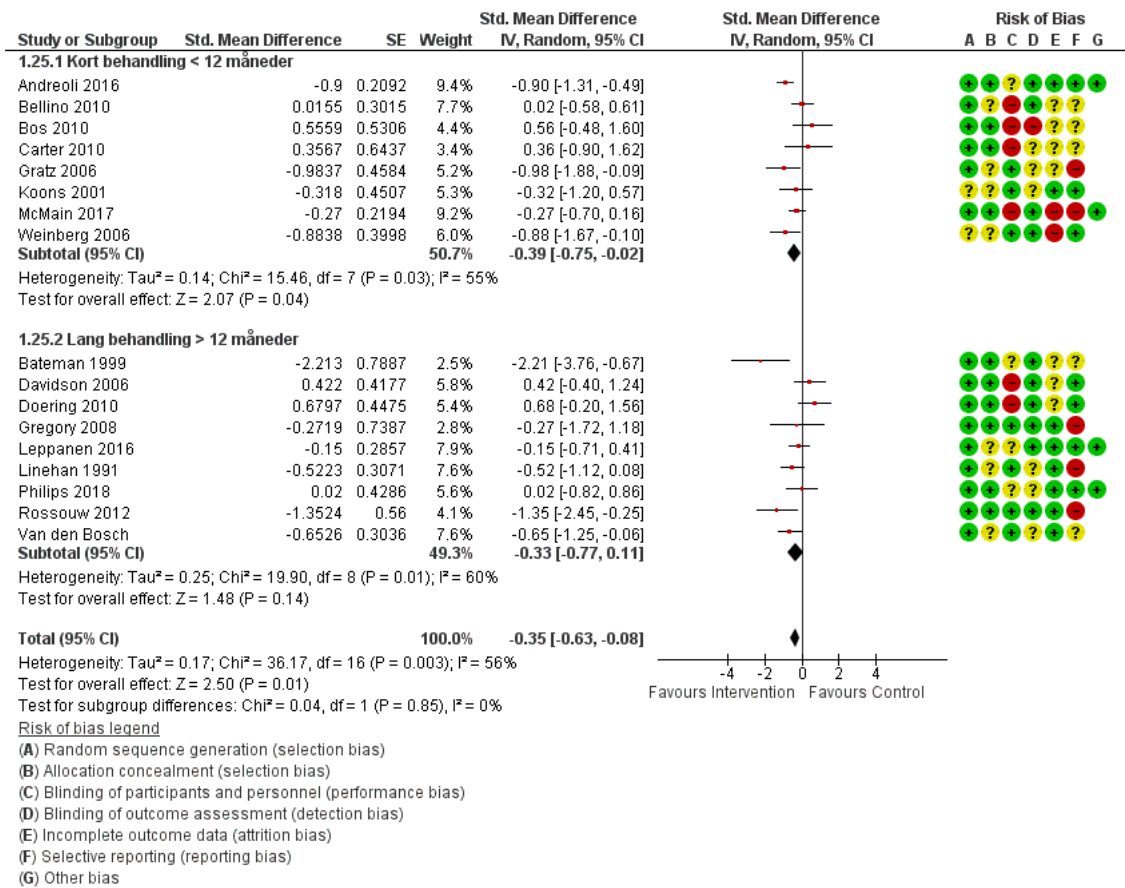
Forest plot of comparison: 1 Intervention vs Control, outcome: 1.17 Symptom distress. End of treatment.

Figure 12 (Analysis 1.24)



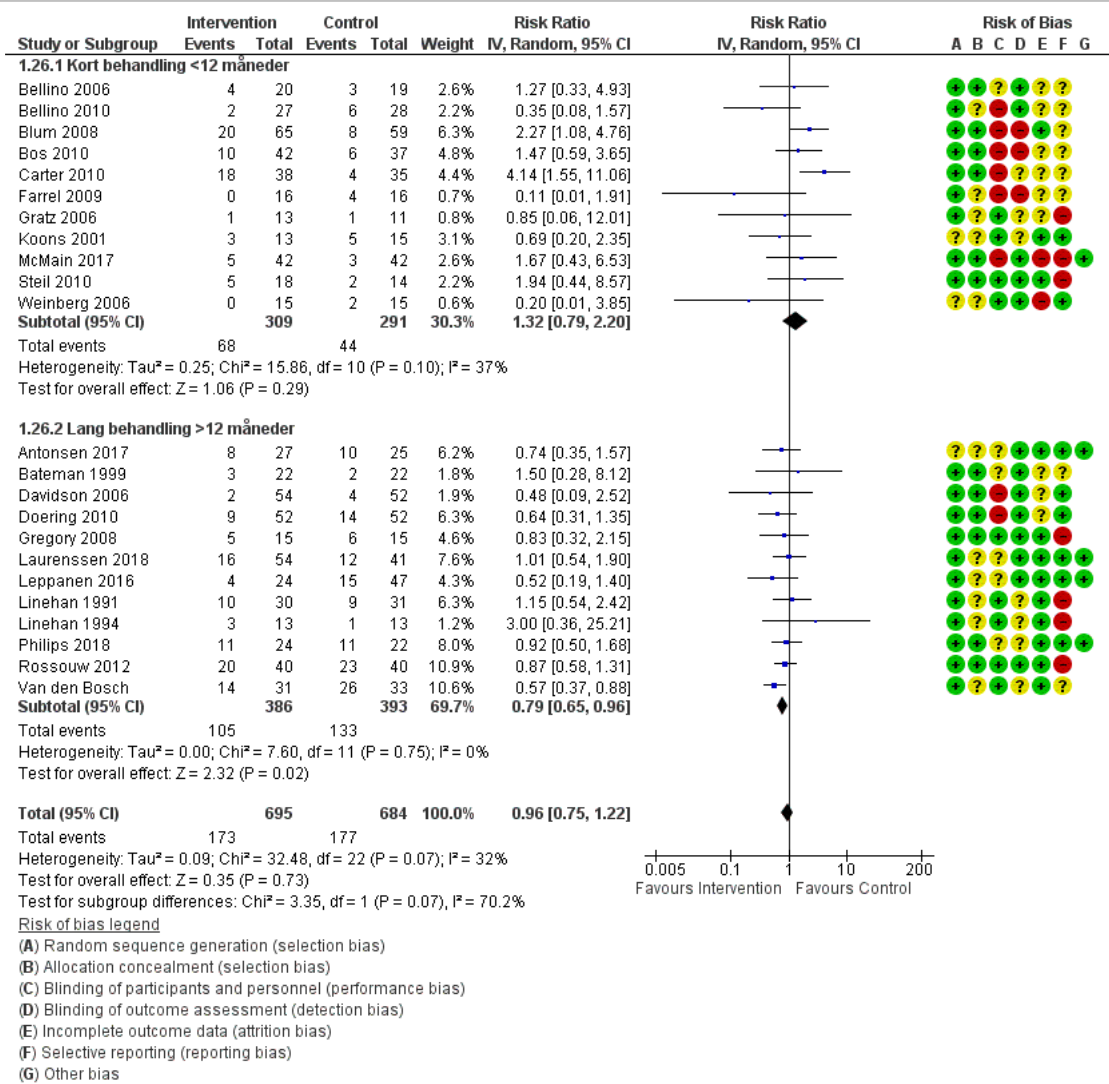
Forest plot of comparison: 1 Intervention vs Control, outcome: 1.24 Proportion of patients hospitalized. End of treatment.

Figure 13 (Analysis 1.25)



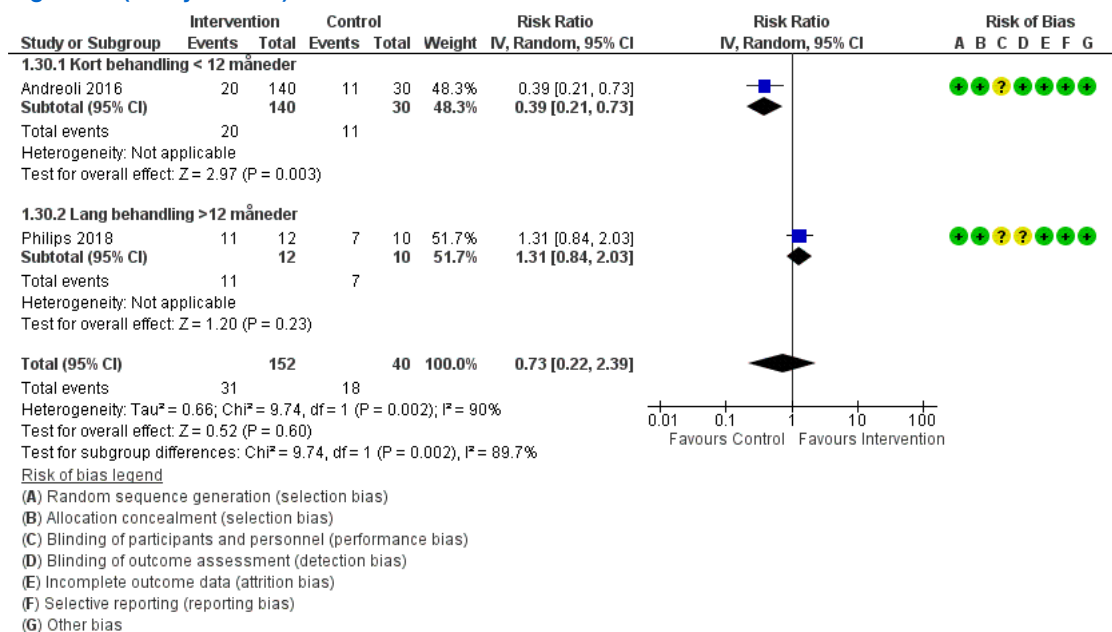
Forest plot of comparison: 1 Intervention vs Control, outcome: 1.25 Selfharm (Selvmordsrelateret adfærd/forsøg) End of treatment.

Figure 14 (Analysis 1.26)



Forest plot of comparison: 1 Intervention vs Control, outcome: 1.26 Drop-out. End of treatment.

Figure 15 (Analysis 1.30)



Forest plot of comparison: 1 Intervention vs Control, outcome: 1.30 No. of hospitalizations. End of treatment.