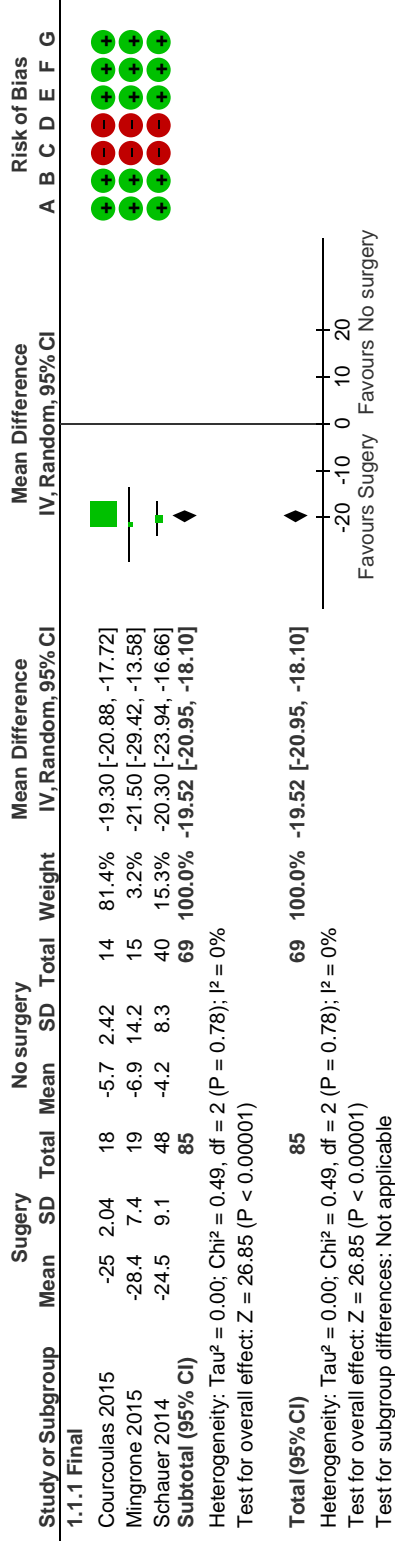


1 Laparoskopisk fedmekirurgi vs ingen kirurgi/medicinsk behandling

1.1 Weight loss (% of preoperative weight)



Risk of bias legend

- (A) Sequence Generation
- (B) Allocation concealment
- (C) Blinding of participants and personnel
- (D) Blinding of outcome assessors
- (E) Incomplete outcome data
- (F) Selective outcome reporting
- (G) Other sources of bias

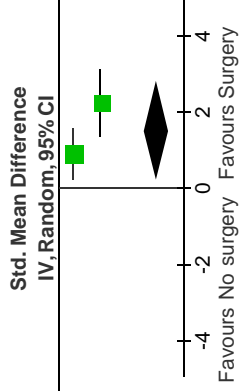
1.2 Quality of Life

Study or Subgroup	Surgery		No surgery		Weight	Std. Mean Difference IV, Random, 95% CI	Risk of Bias
	Mean	SD	Mean	SD			
Halperin 2014	32.6	17.5228	16.1	18.351	19	0.90 [0.23, 1.57]	A B C D E F G
Mingrone 2015	85.6	17.4	42.1	20.9	15	2.23 [1.35, 3.12]	A B C D E F G
Total (95% CI)			38		34	1.54 [0.23, 2.84]	

Heterogeneity: Tau² = 0.73; Chi² = 5.57, df = 1 (P = 0.02); I² = 82%
 Test for overall effect: Z = 2.30 (P = 0.02)

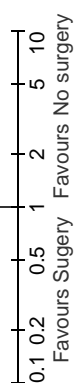
Risk of bias legend

- (A) Sequence Generation
- (B) Allocation concealment
- (C) Blinding of participants and personnel
- (D) Blinding of outcome assessors
- (E) Incomplete outcome data
- (F) Selective outcome reporting
- (G) Other sources of bias

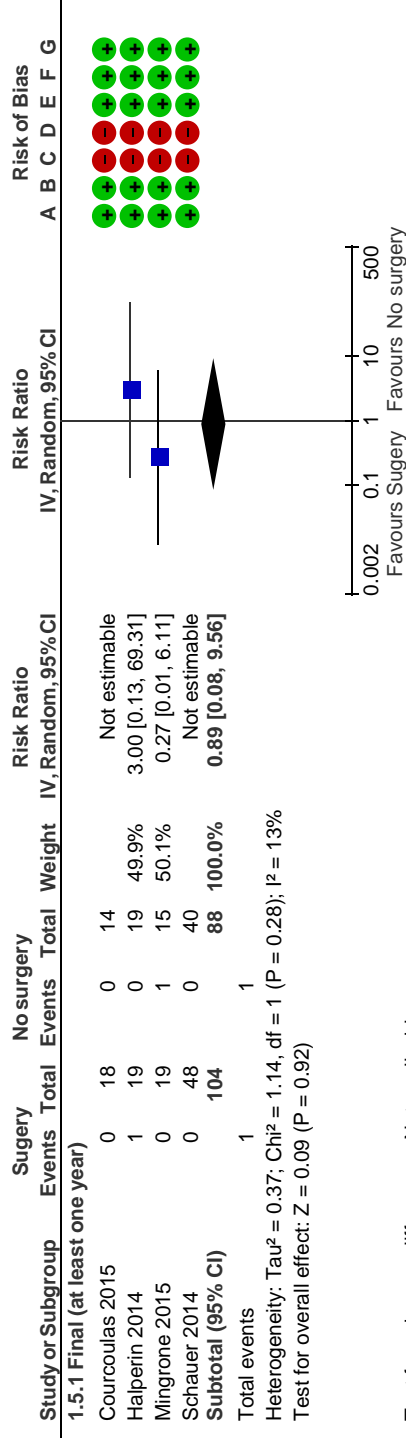


1.3 One year mortality

Study or Subgroup	Surgery		No surgery		Total Weight	Risk Ratio IV, Random, 95% CI	Risk Ratio IV, Random, 95% CI	Risk of Bias																
	Events	Total	Events	Total				A	B	C	D	E	F	G										
1.3.1 One year																								
Courcoulas 2015	0	18	0	0	14	Not estimable	Not estimable	+	+	+	+	+	+	+	+	+	+	+	+	+	+	+		
Halperin 2014	0	19	0	0	19	Not estimable	Not estimable	+	+	+	+	+	+	+	+	+	+	+	+	+	+	+		
Ikramuddin 2013a	0	57	0	51	51	Not estimable	Not estimable	?	?	?	?	?	?	?	?	?	?	?	?	?	?	?		
Liang 2013a	0	31	0	36	36	Not estimable	Not estimable	+	+	+	+	+	+	+	+	+	+	+	+	+	+	+		
Mingrone 2015	0	19	0	15	15	Not estimable	Not estimable	+	+	+	+	+	+	+	+	+	+	+	+	+	+	+		
Schauer 2014	0	48	0	40	40	Not estimable	Not estimable	+	+	+	+	+	+	+	+	+	+	+	+	+	+	+		
Subtotal (95% CI)	0	192	0	175	175	Not estimable	Not estimable																	
Total events	0		0																					
Heterogeneity: Not applicable																								
Test for overall effect: Not applicable																								
Total (95% CI)	192	175	0	0	175	Not estimable	Not estimable																	
Total events	0		0																					
Heterogeneity: Not applicable																								
Test for overall effect: Not applicable																								
Test for subgroup differences: Not applicable																								
Risk of bias legend																								
(A) Sequence Generation																								
(B) Allocation concealment																								
(C) Blinding of participants and personnel																								
(D) Blinding of outcome assessors																								
(E) Incomplete outcome data																								
(F) Selective outcome reporting																								
(G) Other sources of bias																								



1.5 Cardiovascular events

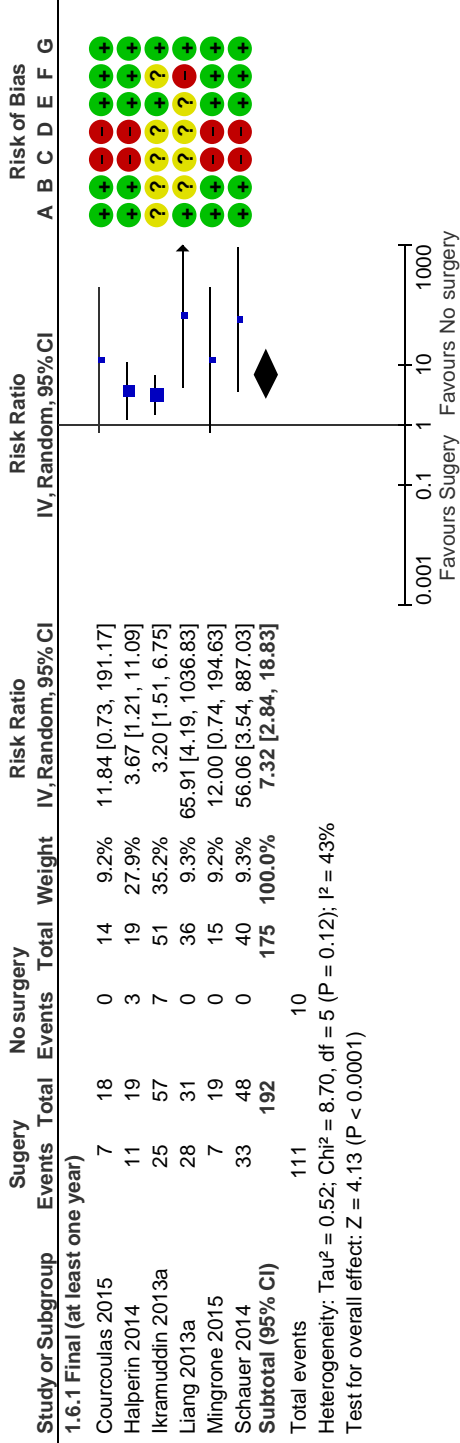


Test for subgroup differences: Not applicable

Risk of bias legend

- (A) Sequence Generation
- (B) Allocation concealment
- (C) Blinding of participants and personnel
- (D) Blinding of outcome assessors
- (E) Incomplete outcome data
- (F) Selective outcome reporting
- (G) Other sources of bias

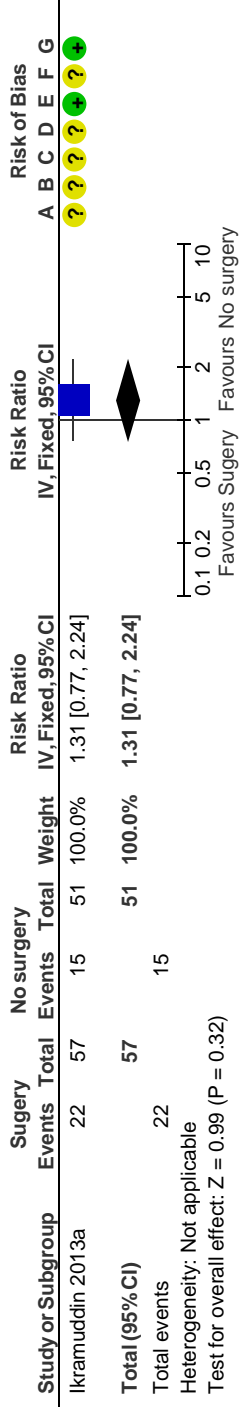
1.6 Remission at type 2 diabetes



Risk of bias legend

- (A) Sequence Generation
- (B) Allocation concealment
- (C) Blinding of participants and personnel
- (D) Blinding of outcome assessors
- (E) Incomplete outcome data
- (F) Selective outcome reporting
- (G) Other sources of bias

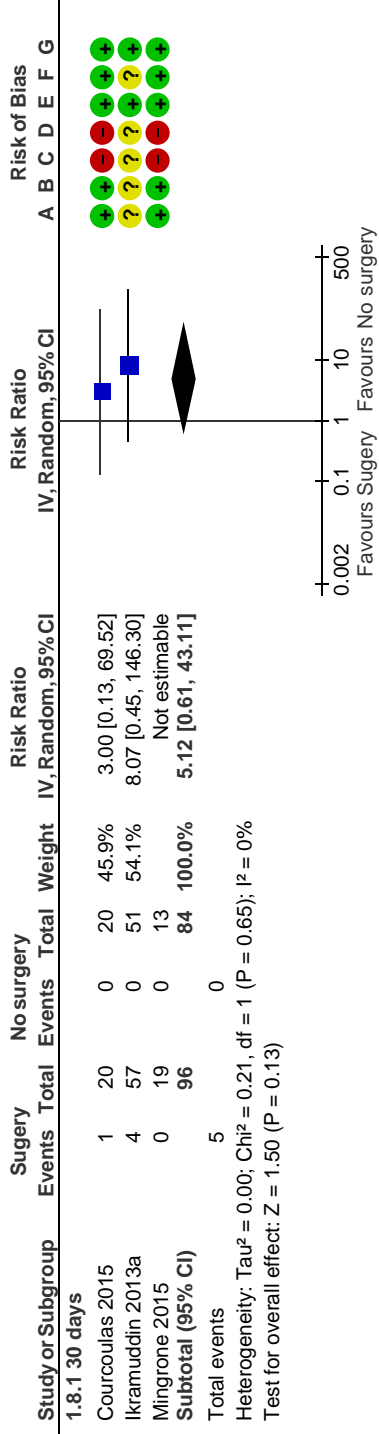
1.7 Admissions



Risk of bias legend

- (A) Sequence Generation
- (B) Allocation concealment
- (C) Blinding of participants and personnel
- (D) Blinding of outcome assessors
- (E) Incomplete outcome data
- (F) Selective outcome reporting
- (G) Other sources of bias

1.8 Peri-operative morbidity



- Risk of bias legend
- (A) Sequence Generation
 - (B) Allocation concealment
 - (C) Blinding of participants and personnel
 - (D) Blinding of outcome assessors
 - (E) Incomplete outcome data
 - (F) Selective outcome reporting
 - (G) Other sources of bias

1.9 Mortality

Study or Subgroup	Surgery		No surgery		Total Weight	Risk Ratio IV, Random, 95% CI	Risk Ratio IV, Random, 95% CI	Risk of Bias						
	Events	Total	Events	Total				A	B	C	D	E	F	G
1.9.1 30 days														
Courcoulas 2015	0	20	0	20				+	+	-	+	+	+	+
Halperin 2014	0	19	0	19				+	+	-	+	+	+	+
Ikramuddin 2013a	0	57	0	51				?	?	?	?	?	?	?
Liang 2013a	0	31	0	36				+	+	?	?	?	?	+
Mingrone 2015	0	19	0	15				+	+	?	?	?	?	+
Schauer 2014	0	48	0	40				+	+	-	+	+	+	+
Subtotal (95% CI)	0	194	0	181				+	+	-	+	+	+	+
Total events	0		0											
Heterogeneity: Not applicable														
Test for overall effect: Not applicable														
Total (95% CI)	0	194	0	181				Not estimable						



Heterogeneity: Not applicable
 Test for overall effect: Not applicable
 Test for subgroup differences: Not applicable
 Risk of bias legend
 (A) Sequence Generation
 (B) Allocation concealment
 (C) Blinding of participants and personnel
 (D) Blinding of outcome assessors
 (E) Incomplete outcome data
 (F) Selective outcome reporting
 (G) Other sources of bias

1.10 Work adherence

Study or Subgroup	Roux-en-Y Gastric Bypass Sugery		No surgery		Risk Ratio IV, Fixed, 95% CI	Risk Ratio IV, Fixed, 95% CI	Risk of Bias
	Total	Events	Total	Events			
					0.1	0.2	
					Favours Roux-en-Y Gastric Bypass Sugery		
					0.5	1	
					Favours No surgery		
					2	5	
					10		

Risk of bias legend

- (A) Sequence Generation
- (B) Allocation concealment
- (C) Blinding of participants and personnel
- (D) Blinding of outcome assessors
- (E) Incomplete outcome data
- (F) Selective outcome reporting
- (G) Other sources of bias