

## Review information

### Authors

[Empty name]<sup>1</sup>

<sup>1</sup>[Empty affiliation]

Citation example: [Empty name]. NKR-nakke pico 4. Ledmobilisering og øvelser vs. ledmobilisering. Cochrane Database of Systematic Reviews [Year], Issue [Issue].

## Characteristics of studies

### Characteristics of included studies

#### *Bronfort, 2001*

<b>Methods</b>	
<b>Participants</b>	
<b>Interventions</b>	
<b>Outcomes</b>	
<b>Notes</b>	

### Risk of bias table

<b>Bias</b>	<b>Authors' judgement</b>	<b>Support for judgement</b>
Random sequence generation (selection bias)	Low risk	From Gross, (a), 2015
Allocation concealment (selection bias)	Low risk	From Gross, (a), 2015
Blinding of participants and personnel (performance bias)	Unclear risk	From Gross, (a), 2015
Blinding of outcome assessment (detection bias)	High risk	From Gross, (a), 2015
Incomplete outcome data (attrition bias)	High risk	From Gross, (a), 2015

Selective reporting (reporting bias)	Unclear risk	From Gross, (a), 2015
Other bias	Unclear risk	

*Footnotes*

## Characteristics of excluded studies

*Footnotes*

## Characteristics of studies awaiting classification

*Footnotes*

## Characteristics of ongoing studies

*Footnotes*

## References to studies

### Included studies

**Bronfort, 2001**

[Empty]

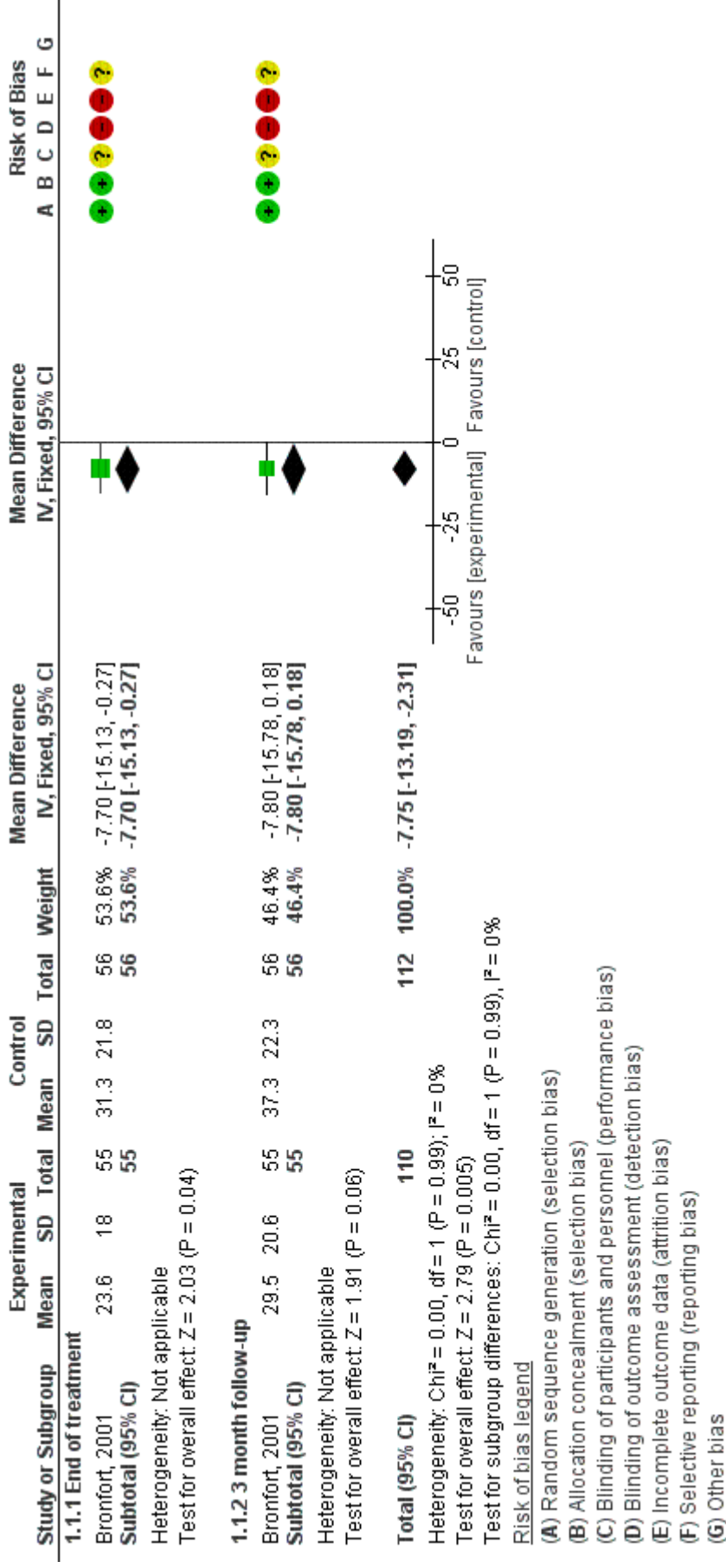
### Excluded studies

## Data and analyses

**1 Intervention vs. control**

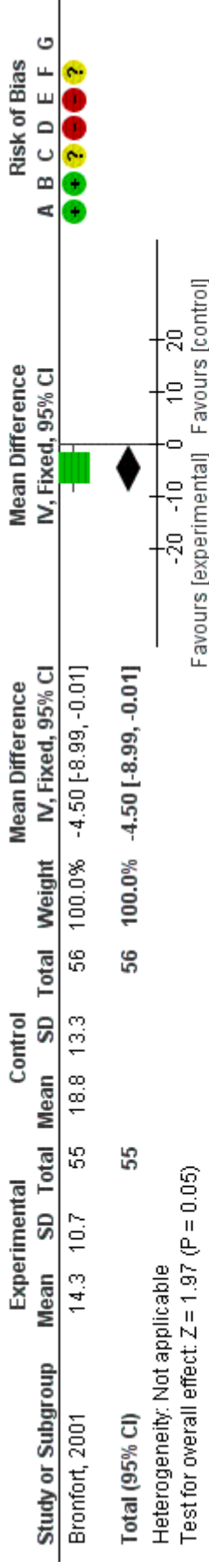
Outcome or Subgroup	Studies	Participants	Statistical Method	Effect Estimate
1.1 Smerte (Pain)	1	222	Mean Difference (IV, Fixed, 95% CI)	-7.75 [-13.19, -2.31]
1.1.1 End of treatment	1	111	Mean Difference (IV, Fixed, 95% CI)	-7.70 [-15.13, -0.27]
1.1.2 3 month follow-up	1	111	Mean Difference (IV, Fixed, 95% CI)	-7.80 [-15.78, 0.18]
1.2 Funktionsevne (Level of function)	1	111	Mean Difference (IV, Fixed, 95% CI)	-4.50 [-8.99, -0.01]
1.3 Livskvalitet (Quality of life)	1	111	Mean Difference (IV, Fixed, 95% CI)	-3.20 [-9.21, 2.81]
1.4 Medicin forbrug (Medication use)	1	111	Mean Difference (IV, Fixed, 95% CI)	-11.80 [-28.59, 4.99]
1.5 Frafald (dropout)	1	127	Risk Ratio (M-H, Fixed, 95% CI)	2.54 [0.51, 12.61]

**Figures****Figure 1 (Analysis 1.1)**



Forest plot of comparison: 1 Intervention vs. control, outcome: 1.1 Smerte (Pain).

Figure 2 (Analysis 1.2)

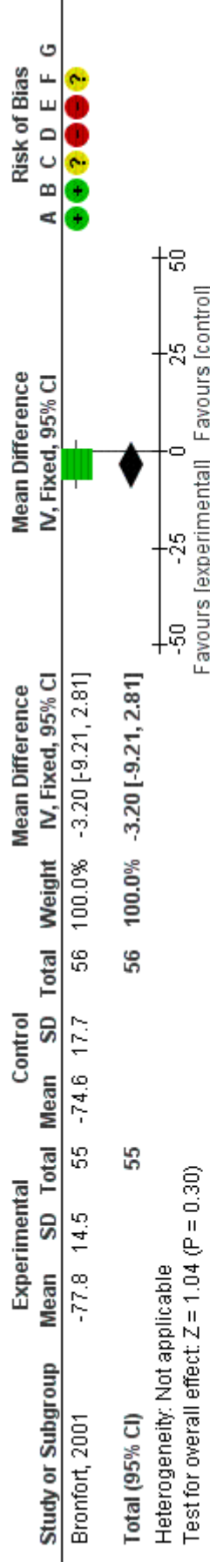


Risk of bias legend

- (A) Random sequence generation (selection bias)
- (B) Allocation concealment (selection bias)
- (C) Blinding of participants and personnel (performance bias)
- (D) Blinding of outcome assessment (detection bias)
- (E) Incomplete outcome data (attrition bias)
- (F) Selective reporting (reporting bias)
- (G) Other bias

Forest plot of comparison: 1 Intervention vs. control, outcome: 1.2 Funktionsevne (Level of function).

**Figure 3 (Analysis 1.3)**

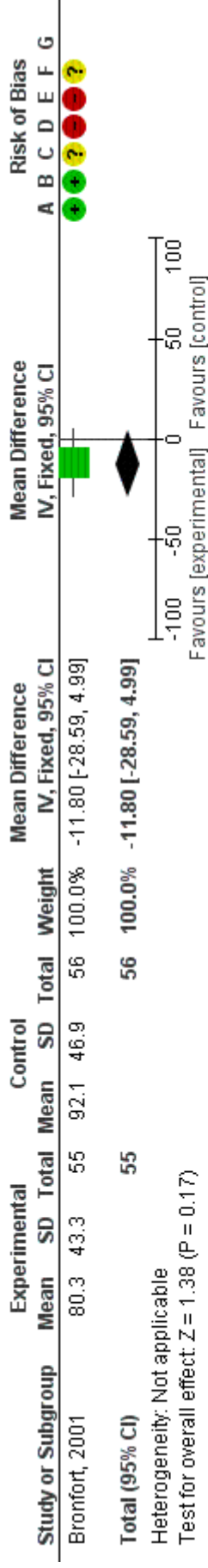


Risk of bias legend

- (A) Random sequence generation (selection bias)
- (B) Allocation concealment (selection bias)
- (C) Blinding of participants and personnel (performance bias)
- (D) Blinding of outcome assessment (detection bias)
- (E) Incomplete outcome data (attrition bias)
- (F) Selective reporting (reporting bias)
- (G) Other bias

Forest plot of comparison: 1 Intervention vs. control, outcome: 1.3 Livskvalitet (Quality of life).

**Figure 4 (Analysis 1.4)**

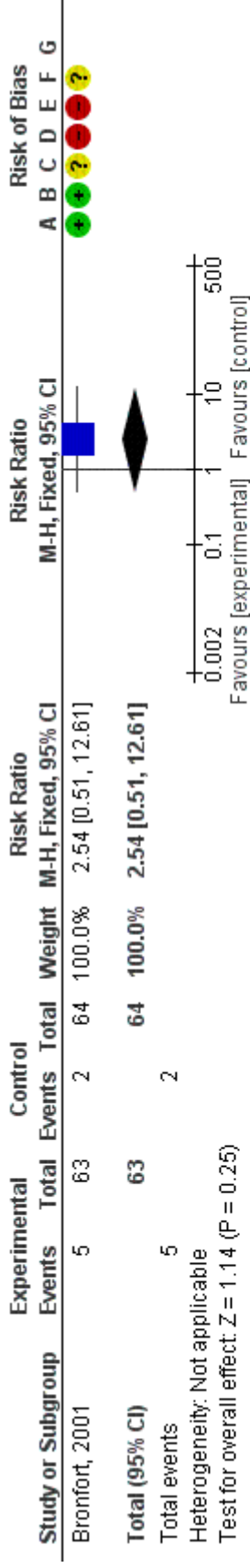


Risk of bias legend

- (A) Random sequence generation (selection bias)
- (B) Allocation concealment (selection bias)
- (C) Blinding of participants and personnel (performance bias)
- (D) Blinding of outcome assessment (detection bias)
- (E) Incomplete outcome data (attrition bias)
- (F) Selective reporting (reporting bias)
- (G) Other bias

Forest plot of comparison: 1 Intervention vs. control, outcome: 1.4 Medicin forbrug (Medication use).

**Figure 5 (Analysis 1.5)**



Risk of bias legend

- (A) Random sequence generation (selection bias)
- (B) Allocation concealment (selection bias)
- (C) Blinding of participants and personnel (performance bias)
- (D) Blinding of outcome assessment (detection bias)
- (E) Incomplete outcome data (attrition bias)
- (F) Selective reporting (reporting bias)
- (G) Other bias

Forest plot of comparison: 1 Intervention vs. control, outcome: 1.5 Frafaald (dropout).